

# MSUNDUZI LOCAL MUNICIPALITY

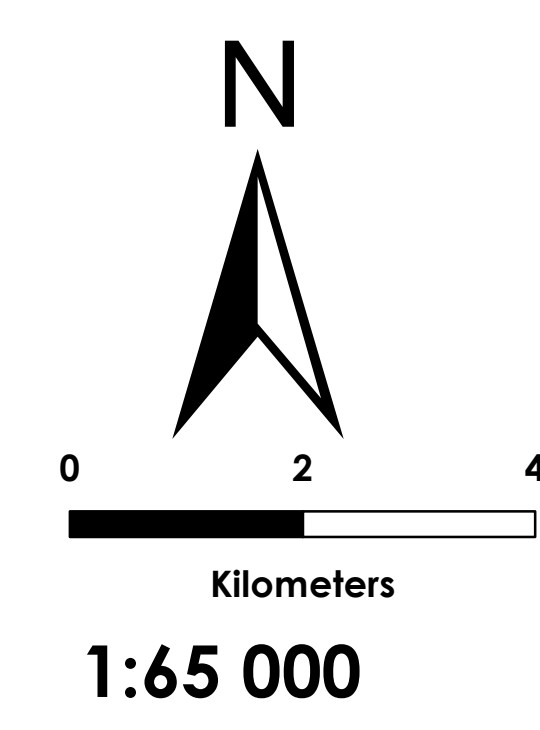
## MSUNDUZI SINGLE LAND USE SCHEME MAP COMPOSITE

### Legend

- Municipal Boundary
- Ashburton LUS**
- Ashburton: Land Use Zone**
- Active Public Open Space
- Agriculture 2
- Commercial
- Equestrian Residential 1
- Existing Road and Lane
- Intermediate Residential
- Light Industry
- Low Impact Mixed Use
- Municipal and Government
- Passive Public Open Space
- Private Open Space
- Protected Area 1
- Railway Purposes
- Special Residential 1A
- Special Residential 2A
- Special Residential 3A
- Utilities and Services 1
- Farm Portion LUS**
- Land Use\_Z**
- Agriculture 1
- Agriculture 2
- Equestrian Residential 1
- Existing Road and Lane (Reservation)
- General
- Protected Area 1
- Railway Purposes (Reservation)
- Rural Residential

**SOURCE:**  
 Msunduzi Municipality  
 Umngeni Municipality  
 Demarcation Board

1:65 000



**SIVEST**

**TOWN PLANNING DIVISION**  
 4 PENCARROW CRESCENT  
 LA LUCIA RIDGE OFFICE ESTATE  
 UMHLANGA ROCKS  
 4320  
 Phone: +27 31 581 1500  
 Fax: +27 31 566 2371  
 e-mail: info@sivest.co.za

Map Reference:	Prepared By:	Date
MSU/SLUS/01/21	ZM	2021/07/22

"COPYRIGHT IS VESTED IN SIVEST IN TERMS OF THE COPYRIGHT ACT (ACT 98 OF 1978) AND NO USE OR REPRODUCTION OR DUPLICATION THEREOF MAY OCCUR WITHOUT THE WRITTEN CONSENT OF THE AUTHOR"

THIS MAP HAS BEEN PREPARED UNDER THE CONTROLS ESTABLISHED BY THE SIVEST QUALITY MANAGEMENT SYSTEM AND MEETS THE REQUIREMENTS OF THE SETA QUALITY GRADING SYSTEM THAT IS ISO COMPLIANT

### Legend

- Sobantu LUS**
- Sobantu: Land Use Zone**
- Active Public Open Space
- Educational
- Existing Road and Lane (Reservation)
- General Residential 3
- Institutional
- Low Impact Mixed Use
- Medium Impact Mixed Use
- Municipal and Government
- Passive Public Open Space
- Special Residential 1
- Worship
- Vulindlela LUS**
- Vulindlela: Land Use Zone**
- Active Public Open Space
- Agriculture 1
- Agriculture 2
- Bus and Taxi Rank
- Dam/Water Resource (Reservation)
- Educational
- Existing Road and Lane (Reservation)
- Extractive Industry
- General
- General Industry
- Health and Welfare
- Municipal and Government
- Passive Public Open Space
- Railway Purposes (Reservation)
- Rural Residential
- Utilities and Services 1
- Worship

### Copesville LUS

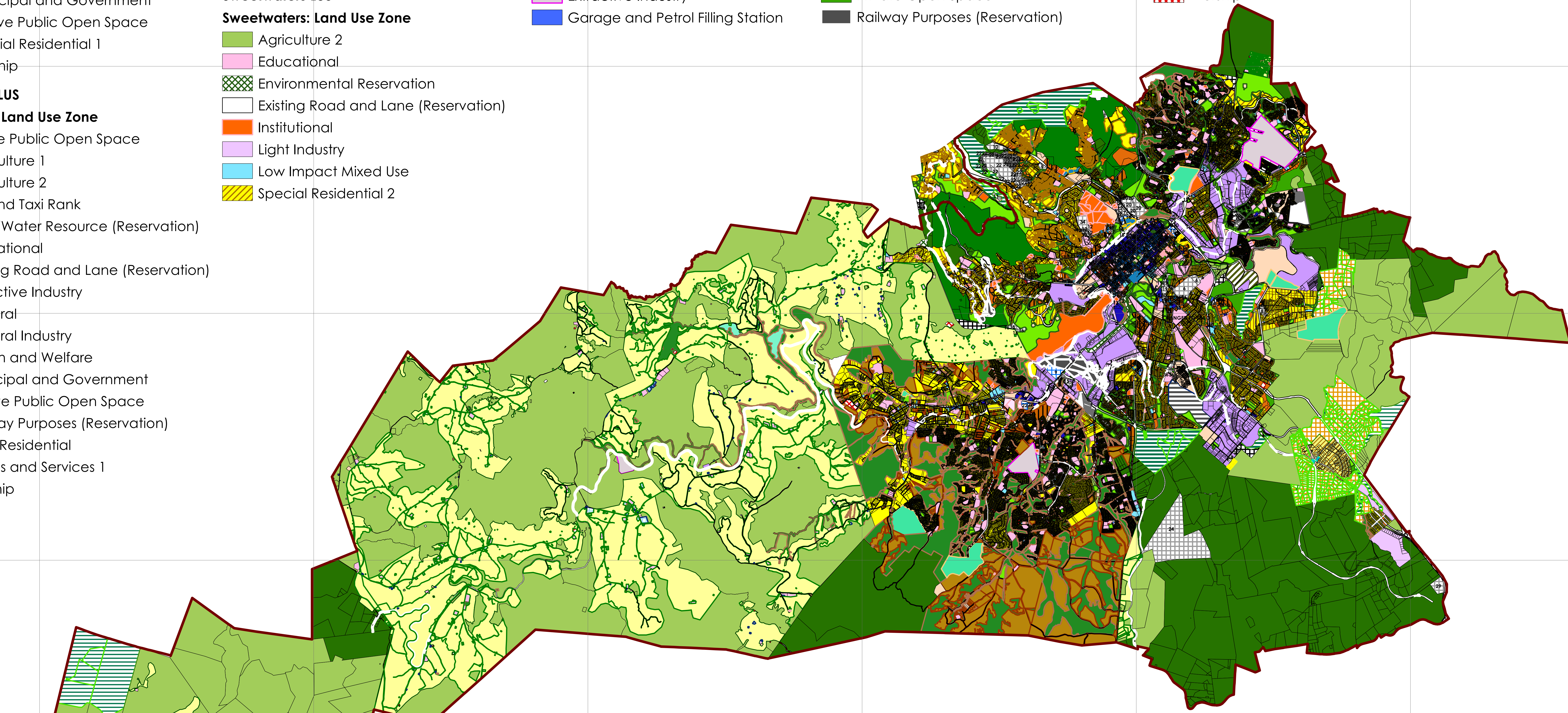
- Copesville: Land Use Zone**
- Agriculture 1
- Agriculture 2
- Educational
- Existing Road and Lane (Reservation)
- General
- Passive Public Open Space
- Rural Residential
- Worship
- Sweetwaters LUS**
- Sweetwaters: Land Use Zone**
- Agriculture 2
- Educational
- Environmental Reservation
- Existing Road and Lane (Reservation)
- Institutional
- Light Industry
- Low Impact Mixed Use
- Special Residential 2

### Greater Edendale LUS

- Greater Edendale: Land Use Zone**
- Active Public Open Space
- Agriculture 1
- Agriculture 2
- Bus and Taxi Rank
- Cemetery
- Educational
- Environmental Reservation
- Existing Road and Lane (Reservation)
- Extractive Industry
- Garage and Petrol Filling Station
- General Industry
- General Residential 3
- Health and Welfare
- Institutional
- Light Industry
- Low Impact Mixed Use
- Medium Impact Mixed Use
- Municipal and Government
- New Public Roads and Streets (Reservation)
- Passive Public Open Space
- Private Open Space
- Railway Purposes (Reservation)

- General Industry
- General Residential 3
- Health and Welfare
- Institutional
- Light Industry
- Low Impact Mixed Use
- Medium Impact Mixed Use
- Municipal and Government
- New Public Roads and Streets (Reservation)
- Undetermined
- Utilities and Services 1
- Worship

- Rapid Urbanisation Management Area
- Refuse Landfill
- Special Business Area
- Special Residential 1
- Special Residential 2
- Special Residential 3
- Special Residential 4
- Special Residential 5
- Undetermined
- Utilities and Services 1
- Worship



### Legend

- WARD\_39 LUS**
- Ward 39: Land Use Zone**
- Agriculture 1
- Agriculture 2
- Bus and Taxi Rank
- Educational
- Existing Road and Lane (Reservation)
- General
- Health and Welfare
- Municipal and Government
- Passive Public Open Space
- Protected Area 1
- Railway Purposes (Reservation)
- Rural Residential
- Utilities and Services 1
- Worship

### PMB LUS

- Pietermaritzburg: Land Use Zone**
- Active Public Open Space
- Agriculture 1
- Agriculture 2
- Airport
- Bus and Taxi Rank
- Car Park
- Cemetery
- Core Mixed Use 1
- Educational
- Environmental Reservation
- Existing Road and Lane (Reservation)
- Extractive Industry
- Forestry
- Garage and Petrol Filling Station
- General Industry
- General Residential 1
- General Residential 2
- General Residential 3
- Health and Welfare
- Institutional
- Intermediate Residential
- LFTEA
- Light Industry
- Low Impact Mixed Use
- Medium Impact Mixed Use
- Multi-Purpose Retail and Office
- Municipal and Government
- Office
- Passive Public Open Space
- Pedestrian Mall
- Private Open Space

- Protected Area 1
- Public Housing
- Railway Purposes (Reservation)
- Rear Access Lane
- Refuse Landfill
- Special Area
- Special Business Area
- Special Residential 1
- Special Residential 2
- Special Residential 3
- Special Residential 4
- Special Residential 5
- Transitional Zone 1
- Undetermined
- Utilities and Services 1
- Worship